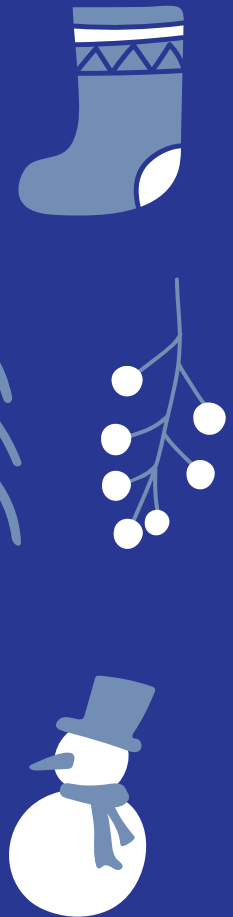




Help us give



to light up Christmas for children with cancer

At Shine a Light, we support the families of local children suffering through cancer. This year, because of Covid, we've been unable to provide our usual services, or be there for families in quite the way we would've liked.



To make up for it, we want give each of our children and young people a Christmas gift. We'd be grateful if you could help.

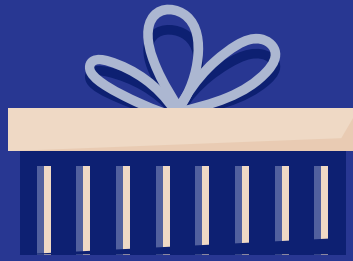
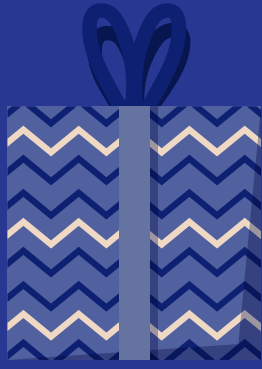


We're asking for donations of Christmas presents suitable for babies and small children through to older teens, each with a value of up to £10. We're hoping to collect a total of 100 gifts.

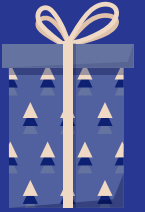
To help us light up Christmas, drop off your gifts at our donation point:

Koco Community Resource Centre, 15 The Arches, Spon End CV1 3JQ Coventry

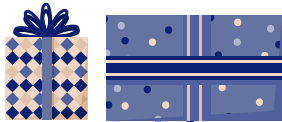




Help us give **100 GIFTS**



to light up Christmas for children with cancer



At Shine a Light, we support the families of local children suffering through cancer. This year, because of Covid, we've been unable to provide our usual services, or be there for families in quite the way we would've liked.



To make up for it, we want give each of our children and young people a Christmas gift. We'd be grateful if you could help.

*To help us light up Christmas, drop off
your gifts at our donation point:*

Koco Community Resource Centre, 15 The Arches,
Spon End CV1 3JQ Coventry

